

# Patients by Zip Code

**Purpose:** The Patients by Zip Code table identifies patients by the zip code of their residence.

**Changes to 2011 Report:** None.

**Key Terms:**

- **TOTAL PATIENTS:** Individuals who have one or more UDS visits *during the reporting year*.
- **PATIENTS BY ZIP CODE:** Count of total patients according to their zip code of residence as of the last visit.
- **OTHER ZIP PATIENTS:** Patients from zip codes that are distant from the grantee or from which 10 or fewer patients were served.
- **UNKNOWN RESIDENCE PATIENTS:** Patients seen but with no zip code on record.

**Table Tips:**

- Zip codes with less than ten patients should be aggregated and patients reported as "Other."
- For patients where zip code is not known, zip code should be reported as "Unknown."
- In general, 'Other' and 'Unknown' patients should not exceed 20% of total patients unless there is a clear programmatic reason.
- **HOMELESS PATIENTS:** Use zip code of location where patient receives services if no better data exists; else report in 'Unknown.'
- **MIGRANT PATIENTS:** Use zip code of the patient's temporary local housing if available or locations where patient receives service; else report in 'Unknown.'

**How Data are Used:**

- Information is used to electronically map health center service area data and relate patients to community population and resources.
- Data is combined across grantees to enable BPHC and health centers to examine total program reach, remaining need, and to avoid service area conflicts.
- Maps and data can be accessed using a new on-line tool, the [UDS Mapper](#).

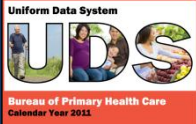
**Patients by Zip Code:**

Zip Code	Patients
Other Zip Codes	
Unknown Residence	
TOTAL	

**Cross Table Considerations:**

Patients by Zip Code, Tables 3A, 3B and 4 describe the SAME PATIENTS and must be equal. (Shown on Table 3A Quick Fact Sheet.)





# Patients by Zip Code

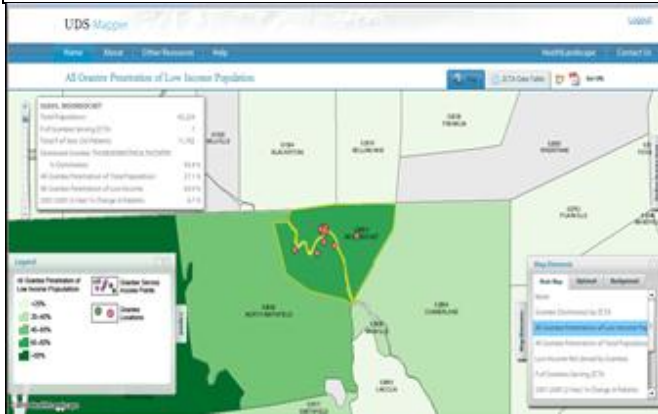
## UDS Mapper Layers:

### Main Map Layers:

- Grantee Dominance
- FQHC Penetration (low income/total)
- Count of grantees serving area
- Change in patients served (1&2 year)
- Census Demographics

### Optional Layers:

- Grantee locations/sites
- Other federally-linked providers
- HPSA/MUA/MUP boundaries
- Census boundaries/roads
- Background maps/satellite images



## UDS Mapper Functionality:

- Combine layers to show the map elements of interest.
- Identify map elements and get descriptive information.
- Define custom service areas and export data to create aggregate statistics.
- Customize the map with drawn elements and labels.
- Export map to PDF or create URL to share via the web.

## Uses of UDS Mapper Tool:

- Visualize relationship between patients, population, and health services.
- Identify potential areas of need and quantify potential resources needed.
- Explore relationship with nearby grantees.
- Plan for growth or changes in service delivery network.
- Generate maps and data for grant applications and other presentations.

ZCTA	Post Office	State	# of Grantees	Dominant Grantee	Total Populat	Low Incom	Total # Sect. 330 Patients	Unservd (%)	Penetrat
Summary:					125,274	27.5...	14,619	12,971	52...
01504	BLACKSTONE	MA	3	THUNDERMIST ...	8,804	1,179	152	1,018	12...
02864	CUMBERLA...	RI	7	THUNDERMIST ...	31,840	4,387	1,060	3,327	24...
02865	LINCOLN	RI	6	THUNDERMIST ...	17,684	2,519	419	2,100	16...
02895	WOONSOCK...	RI	7	THUNDERMIST ...	43,224	16,7...	11,702	5,033	69...
02896	NORTH SMIT...	RI	4	THUNDERMIST ...	10,332	1,232	689	543	55...
02917	SMITHFIELD	RI	5	NORTHWEST CO...	13,390	1,547	597	950	38...

